

Kalido® Master Data Management™

Kalido delivers the only business-centric master data management solution that supports master data governance across the enterprise. With Kalido MDM, business users and decision makers can begin to trust their data and finally unlock the real value of the “true intelligence” within their systems.

MDM and Data Governance

Data governance is the process of managing the policies, rules and systems that govern how data is maintained and used throughout an organization. Because master data drives operational and analytical business processes, invalid master data can have a negative impact on business. With MDM as a key component of a data governance program, organizations can improve business decision making through better data consistency and data quality while reducing risk and cost.

Kalido MDM offers the core capabilities to model, master and govern master data, leading to better data that feeds business processes to lead to better business outcomes.

Model it for Every Domain

Rich modeling

Kalido MDM is business model driven. The business model constructs support the real-world business environment, enabling your MDM repository to reflect the way the data is used in consuming systems.

Visual Model Development

Integrated visual business modeler creates or imports models covering common and obscure domains without costly customizations, enabling you to meet your MDM needs in a single technology.

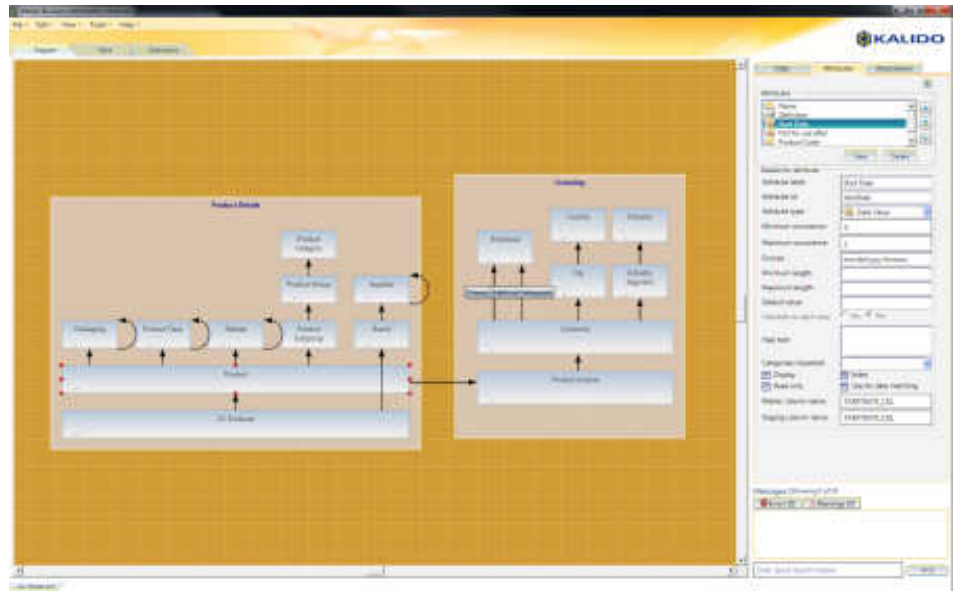
Domain-agnostic

Kalido supports every domain in the model as well as in matching and mapping master data, which reduces manual stewardship requirements.

Master it with Everyone

Dedicated Interfaces

Kalido MDM includes audience-specific interfaces that meet the needs of data stewards, business application users and information



Visually develop models in Kalido, or import existing assets and extend the model to meet your most up to date requirements.

consumers. These interfaces allow for active, role-based stewardship for everyone involved in managing, creating and using master data.

Workflow and API

Kalido MDM includes an embedded workflow capability and a business-model-driven API which enables real-time collaboration for the process of managing master data.

Proactive Governance

Kalido MDM offers policy-driven data governance for a top-down approach to governing master data. This capability enables proactive executive level participation and involvement in master data governance.

Govern it Everywhere

Universal Access

Kalido capabilities are available on mobile devices, in browsers and via MDM applets embedded in operational and analytical business applications, making it easy for everyone everywhere to participate in the master data governance process.

Change Management

The Kalido MDM model is easily

changed and incrementally expanded to rapidly accommodate evolving as well as new master data lifecycle requirements.

Audit Trail

All audit, validation and security requirements are managed seamlessly. Kalido MDM also includes robust history tracking for a bullet-proof audit trail to meet regulatory and statutory requirements.

About Kalido

Kalido is the leading provider of agile information management software. Kalido enables companies to manage data as a shared enterprise asset by supporting the business process of data management. Kalido software has been deployed at more than 300 locations in more than 100 countries, including 20 percent of the world's most profitable companies as determined by Fortune Magazine. More information can be found at: <http://www.kalido.com>

US Tel: +1 781.202.3200

Eur Tel: +44 (0)845 224 1236

Email: info@kalido.com